

Fiery® Pro9 Server with Command WorkStation®

OKI

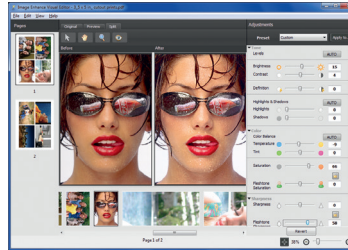
Dramatically fast. Extraordinary ease of use. Industry leading job workflow and colour management.

The Fiery® Pro9 Server from EFI enhances the already impressive performance of the Pro9 Series of Multimedia Production Platform printers and digital presses from OKI.

The Fiery® Pro9 Server from EFI®

Among its many advantages, the Pro9 Server can optimise the White-and-Clear Toner and envelope printing functionality of the Pro9 Series1 to increase your productivity and profits.

Built upon EFI's robust Fiery FS150 Pro system, the Pro9 Server uses the most popular Fiery features — including Command WorkStation®, Spot-On™ and Adobe® Print Engine 3.0 — to expand the production capabilities and improve the operational efficiencies of print shops and in-house printing services.

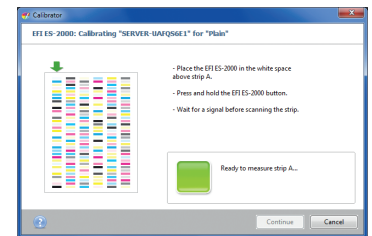


With the Fiery Pro9 Server and Pro9 Series devices from OKI, you can simplify and produce complex jobs with greater efficiency, consistency and profitability.

The Fiery Pro9 Server is compatible with Pro9431/9541/9542 Printers

Put these powerful Fiery advantages to work

- **Offer personalised marketing campaigns** – incorporate industry leading VDP formats, including FreeForm™ 2.1, to simplify setup for jobs requiring variable data printing
- **Fix images late in the production process** – correct tone and colour, sharpen or smooth images, and correct for red eye even after the job has been submitted to the Pro9 Server
- **Get consistent colour every time** – easily calibrate the Pro9 Server's RIP with the output of the Pro9 Series printer/envelope press to ensure uniform results job to job



Submit, manipulate and reprint jobs from your desktop

Fiery Command WorkStation is your window into the entire printing workflow, simplifying the management and adjustment of complex jobs via an intuitive, flexible interface. With Command Workstation, you can:

- Submit and manage jobs locally or remotely from Mac® OS and Microsoft® Windows® clients
- Visually confirm document content, adjust images, customize and substitute spot colours
- Increase efficiency and reduce errors with server-based workflows, such as Hot Folders, for repeatable results that are easy to setup and use throughout the print facility

Fiery® Pro9 Server with Command WorkStation®

Pro9 Server Highlights:

The **Fiery colour management system** combines industry standards — such as CMYK press emulations, RGB source conversions, PANTONE® libraries — with the flexibility of an open architecture, enabling users to customize the Pro9 Server to meet their specific colour matching needs.

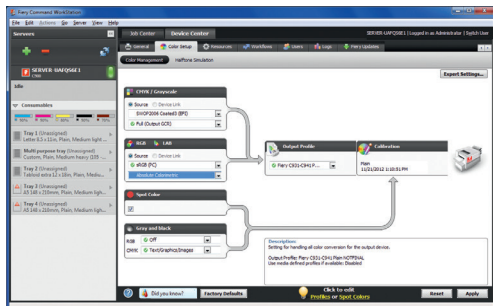
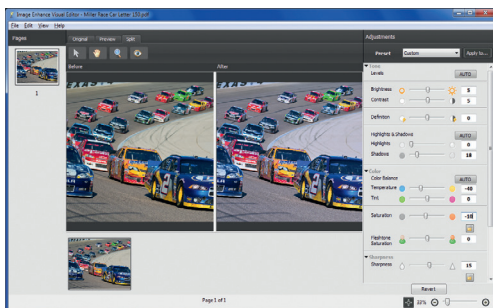
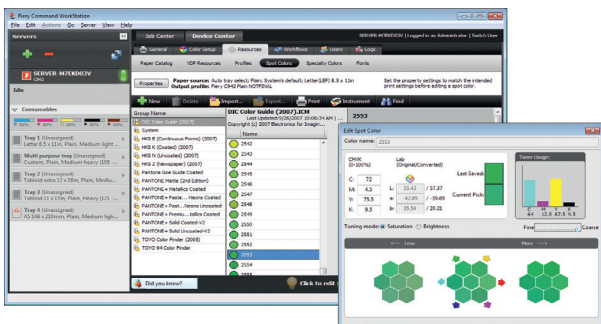


Image Enhance Visual Editor allows for quick adjustment of images within print jobs, correcting common colour issues, such as temperature, brightness, contrast and saturation. A preview function displays the adjustment's effect on the image and allows for fine-tuning.



Spot-On™ enables adjusting and managing spot colours used as critical “must-match” colours. Fiery Spot-On makes it easy to visually confirm and edit CMYK values for fine-tuning spot colour definitions on the Pro9 Server.



Specifications:

System

- **Supported Printers:** Pro9431/9541/9542
- **Supported Envelope Presses:** All Pro9 Envelope System Options
- **Fiery® System Version:** Fiery FS150 Pro
- **Operating System:** Windows® 7 Professional Embedded System, 64-bit
- **Processor:** Intel® G1820 (2.7GHz)
- **Hard Disk Drive:** 500 GB SATA
- **Memory:** 4GB
- **Network:** 1Gbit Ethernet
- **USB Ports:** 6

Fiery Colour Technology

- PANTONE® Calibrated and PANTONE® Plus
- Fiery Spot-On™ to adjust and substitute colours
- Enhanced support for OKI White and Clear spot colours
- RGB source profiles and rendering intent
- CMYK source profiles including GRACoL, SWOP2006, TOYO, DIC
- Auto-Trapping
- Halftone Simulation
- Embedded profile support and override
- Composite Overprint for Spot Colours, CMYK, Grayscale
- Image Enhance Visual Editor
- Calibrator
- Supports Fiery Colour Profiler Suite and ES-2000 Spectrophotometer (both optional)

Client Support

- Fiery PostScript® driver for Windows and Mac® to print directly from applications to the Fiery Pro9 Server
- Command WorkStation® 5 for Windows and Mac

Productivity Features

- Adobe® PDF Print Engine v3.0
- Enhanced PCL® 6 and PCL 5
- 138 Adobe PostScript fonts
- Fiery FreeForm 2.1 for basic VDP
- Variable Data Print formats: PPML v3.0, PDF/VT-1, PDF/VT-2, Creo VPS

- Fiery JDF v1.4
- Hot Folders
- Virtual Printers
- Booklet Maker with wizard
- Image shift
- Spool-Rip-Print simultaneously
- Tray Alignment
- Workflow management and customizable presets
- Schedule printing

Network Support

- TCP/IP, IPv6 (logo certification and security)
- Apple Talk, Bonjour
- Point and Print driver deployment
- Direct mobile printing
- SNMP v3, IPP, FTP, SMB v3.0, WSD, Port 9100
- Email – Print PDF files via Email

Security Features

- Admin, Operator and Guest accounts
- User authentication
- Secure Erase
- IP Sec, IP filtering, Port blocking, SSL

Compatibility

- Fiery Colour Profiler Suite
- ES-2000 Spectrophotometer
- Fiery Impose
- Fiery Compose
- Fiery Impose-Compose

Environmental

- **Dimensions (HxDxW):** 12.6" x 13.8" x 5.5" (32.0 cm x 35.0 cm x 14.0 cm)
- **Weight:** 15.0 lb. (6.8 kg)
- **Electrical:** 100V-240V @ 50Hz-60Hz
- **Power Consumption:** 180W

Ordering Information:

Server

- Fiery C9 Server²

OKI Part Number

46299303

For more information on Pro9 Series colour devices, visit www.oki.com/eu

OKI EUROPE LTD.

EMEA Head Office
Blays House, Wick Road
Egham, TW20 0HJ
United Kingdom
T +44(0) 20 8219 2190
F +44(0) 20 8219 2199
WWW.OKI.COM/EU

¹ White and Clear Toner limited to Pro9541 (CMYK + White or Clear Toner) and Pro9542 (CMYK + White Toner).

² Does not include server display, keyboard or mouse.

Specifications are subject to change without notice.

