



PROTOPIC AUTO - 540 HS



Applied Patents for PROTOPIC AUTO-540 HS

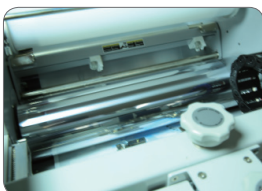
- ▶ Laminator with paper device
- ▶ The method to form embossing pattern
- ▶ Film roll holder for laminators
- ▶ Laminator equipped with embossing roller

Key features of PROTOPIC AUTO-540 HS

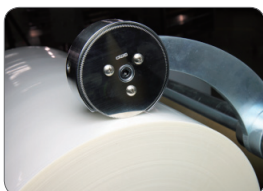
- High speed lamination (25m/min) with the bigger diameter (138mm) of heating roller
- Air compressor & low noise vacuum pump included
- Stream feeder installed for auto paper-feeding
- Emotional-touching control system
- Perfect lamination without bubbles for all kinds of paper quality
- Capacitive touch screen
- High pressure of laminating roller for enhancing quality of laminating results
- Storage of air compressor & vacuum pump in the cabinet
- Well-streamlined function adjustment by use of capacitive type touch-screen
- Function of various information for user-friendly convenience
- One unified machine design including cabinet for easy storing air-compressor & vacuum pump
- Swivel type control panel
- Upgraded Decurling Device



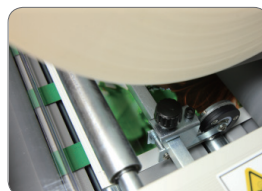
High glossy chrome
plated roller



Automatic gap adjustment for
feeding paper



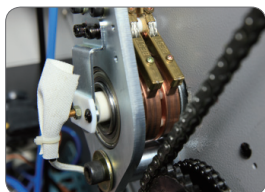
Film perforator



In-line perforator



Auto paper-feeding device



Built-in temperature
sensor inside roller



Capacitive type touch-screen



Decurling device



Air cooling system



Air Compressor / Vacuum Pump

PROTOPIC AUTO- 540 HS

www.gmp.com

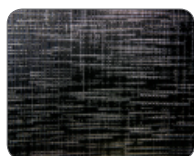
Pod Automatic Roll Laminator

Basic patterns of embossing rollers

Easy conversion to embossing lamination mode - 6 types of embossing rollers



▲ Photo Texture



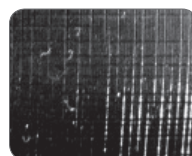
▲ Fine Texture



▲ Leather Texture



▲ Sparkler Texture



▲ Silky Texture



▲ Linen Texture

Application

- Poster, pop sign, menu
- Book cover
- Photo album & inner papers
- Photo-embossing lamination
- Name card
- Gift certificate
- Label
- New year's card / book
- Silver halide replacement system
- Digital media whole page sleeking - gloss, matt, hologram
- Digital media spot sleeking - gloss, hologram, metallic



Specification

Dimension (W*L*H, mm)	800*1675*1320mm	Heating system	Infrared heater
Max. Laminating Speed	25min	Laminating temp.	MAX.150℃
Max. Paper Size (W*L, mm)	540*750mm	Temp. Control	Touch-screen
Paper pile height	350mm	Speed control	Touch-screen
Laminating Films	Single Side: POLYNEX, PERFEX, NYLONEX FILM Sleeking: Gloss, Matt, Hologram, Metallic Foil	Display system	LCD Panel
Substrate Thickness	120~350g/m ²	Roller pressure	Pneumatic Cylinder
Front roller diameter	T: 138 / B: 99	Film core size	77mm (3")
Rear roller diameter	55	Air compressor	2HP, 116 L/min
Power requirement	AC 380~400V/21A	Vacuum pump	250w 120 L/min
Power consumption	5kw	Temp. Sensing method	Internal sensor
Warm-up time	7min	Cooling device	Air blower

※ GMP reserves the right to change specifications without prior notice.