

# MagnaClean Professional3 Sense®

MagnaClean Professional3 Sense®, the only Wi-Fi enabled magnetic filter. ADEY's unique Sense® technology not only provides high performance system protection, it also predicts potential system problems and offers connected preventative maintenance.

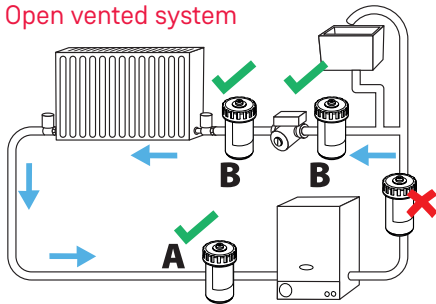
**IMPORTANT** - Always follow the electrical & safety standards when installing a filter.

These instructions are designed to support installers in the safe and effective installation and servicing of the filter. It is recommended that the filter is installed by a qualified heating engineer.

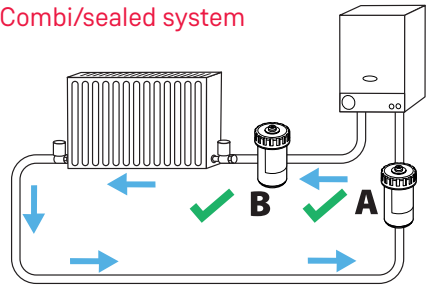
## Installation overview

MagnaClean Professional3 Sense can be installed anywhere before the boiler. To achieve the best level of protection, it is recommended that the filter is fitted after the last radiator and before the boiler. This also ensures a system flush can be carried out using a MagnaCleanse® on the return.

Open vented system



Combi/sealed system



Note: In both diagrams, position A is best practice, Position B is suitable if space is tight on the return.

The following instructions are designed to support engineers in the safe and effective installation and servicing of MagnaClean Professional3 Sense and should be followed at all times.

This must be completed prior to installation:

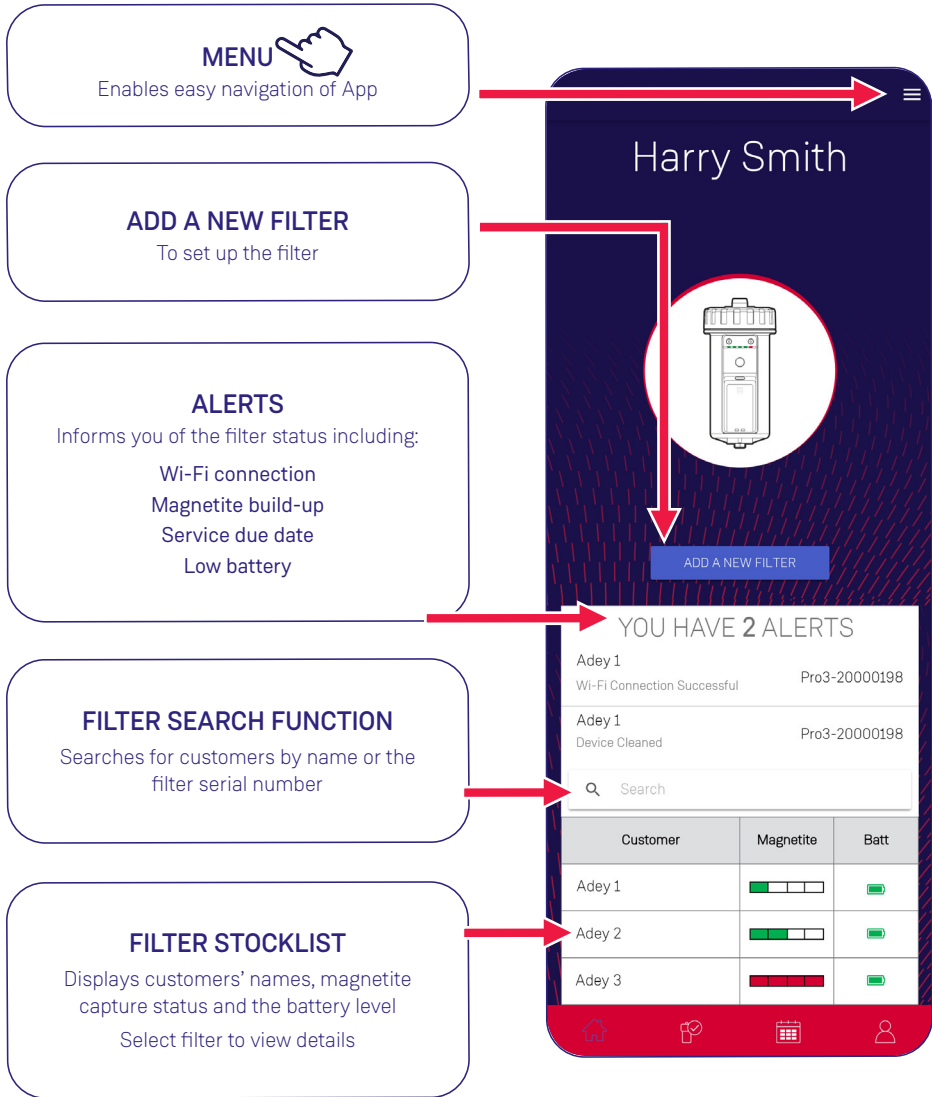
Pre-Installation checklist	
Have you downloaded the ADEY ProClub® App from Google Play or App Store?	
Has the homeowner got Wi-Fi?	
Is the homeowner happy to provide you with the password for installation? (Essential) Note: The homeowner's Wi-Fi password is not stored.	
Check Wi-Fi connectivity at proposed filter location to ensure the filter can connect and communicate with the homeowner's Wi-Fi router once installed.	
Have you recommended to the homeowner to download the homeowner App?	
Confirm homeowner details to be used for warranty registration	
Ensure guide and filter spanners are left with the homeowner	

Visit [Plumb2u](#)

See product

# ADEY ProClub App

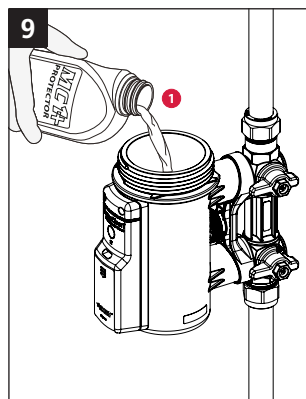
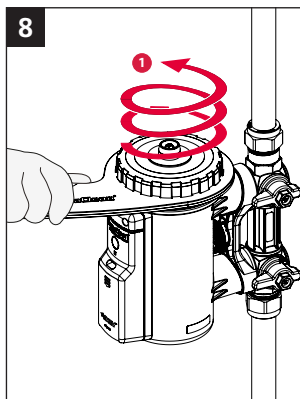
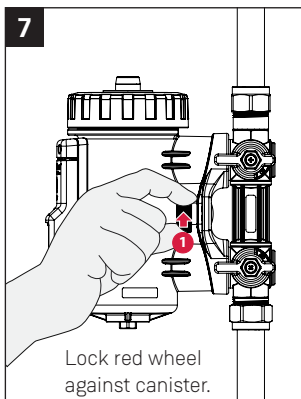
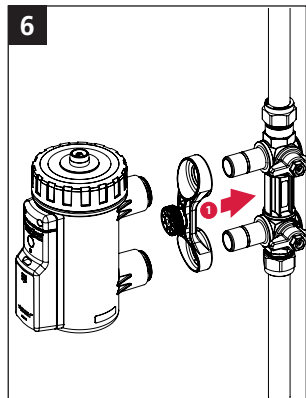
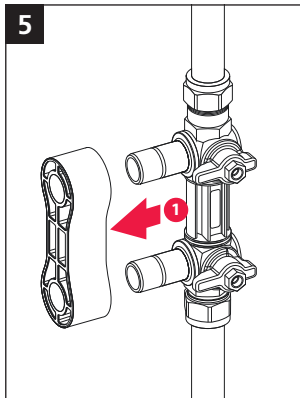
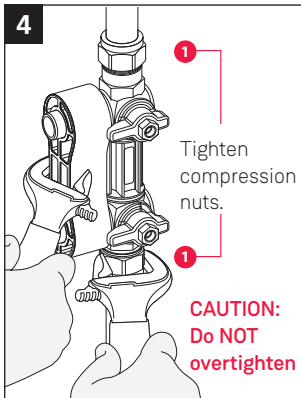
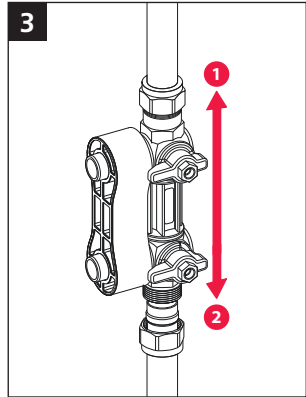
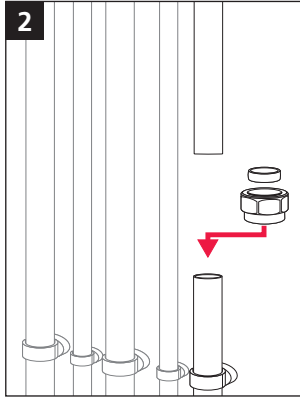
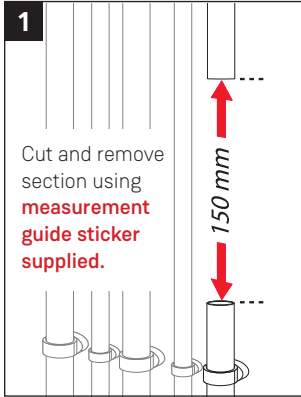
MagnaClean Professional3 Sense Dashboard Overview:



Visit **Plumb2u**

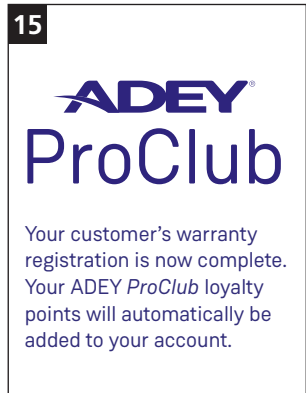
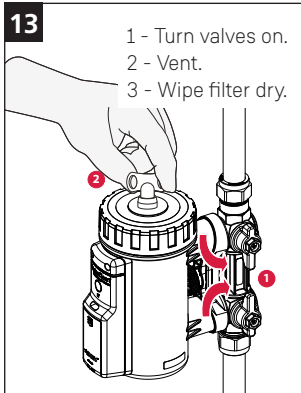
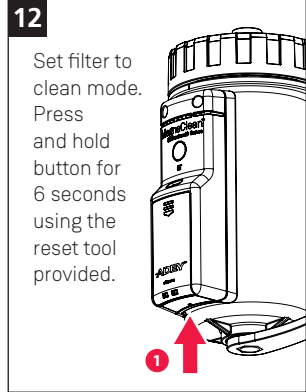
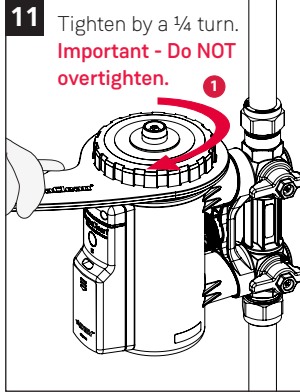
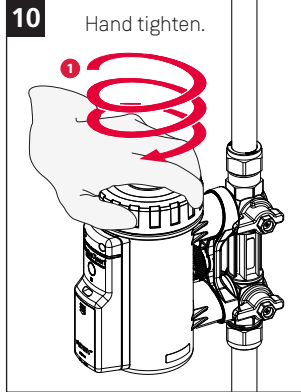
See product

# New filter installation - Always ensure the filling loop is fitted after the filter.



Visit [Plumb2u](https://www.plumb2u.com)

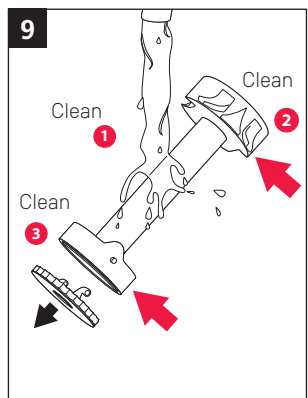
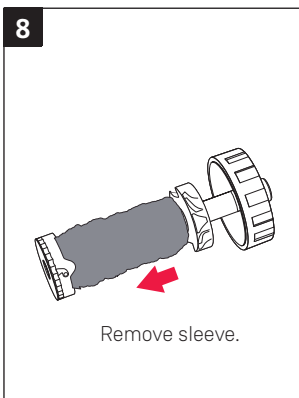
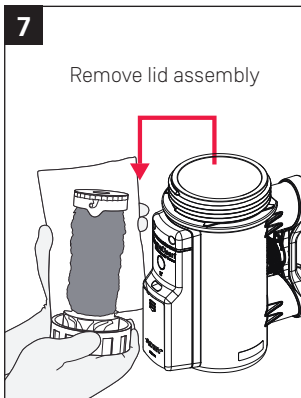
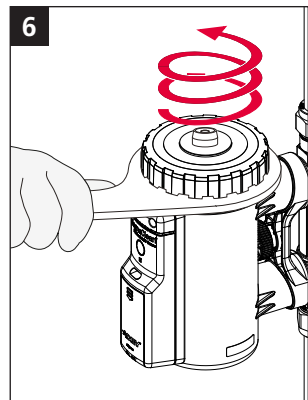
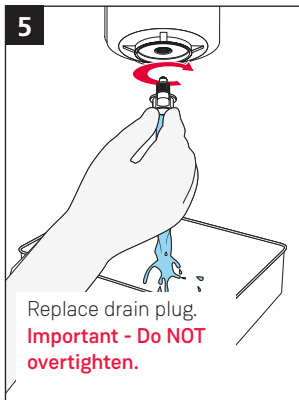
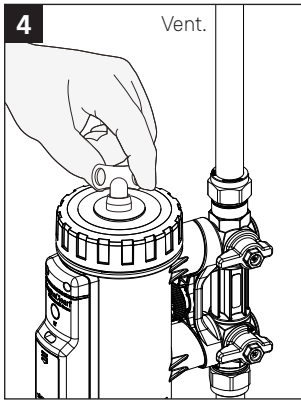
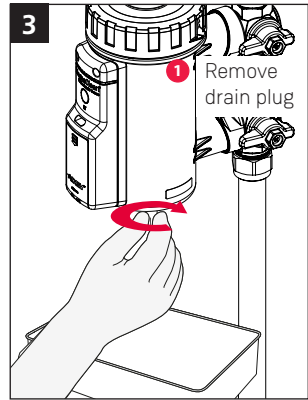
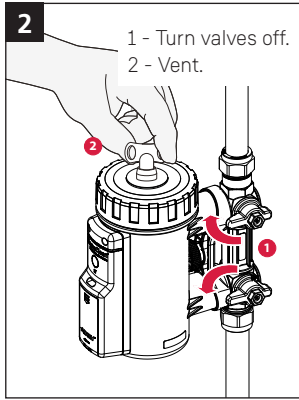
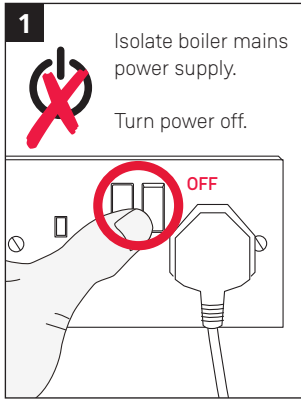
See product



Visit [Plumb2u](#)

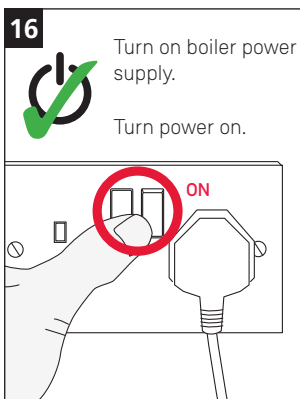
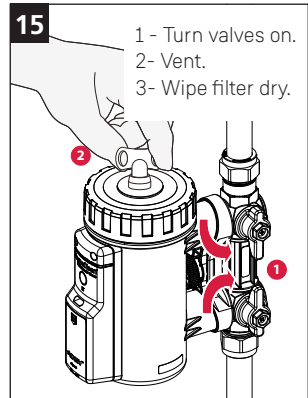
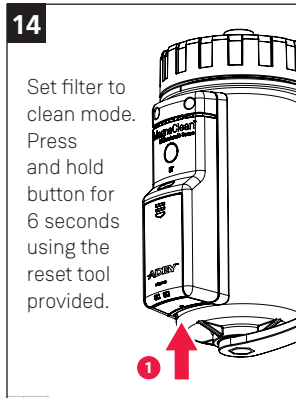
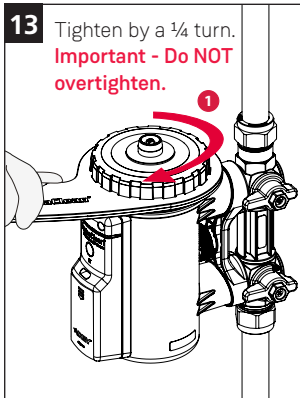
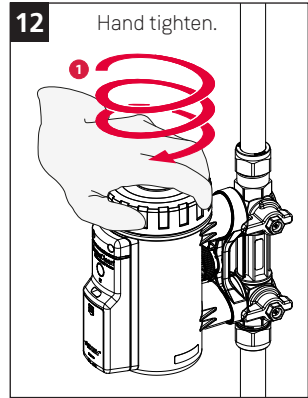
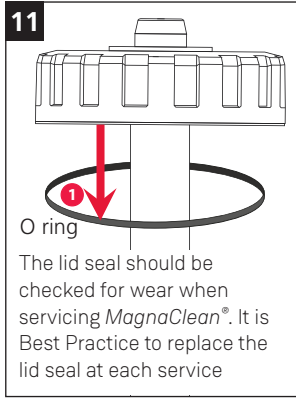
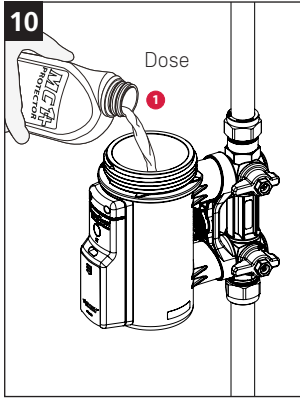
See product

# Servicing



Visit [Plumb2u](https://www.plumb2u.com)

See product



IMPORTANT: Always clean the magnet and reset the product when the filter lid has been removed.

Visit [Plumb2u](https://www.plumb2u.com)

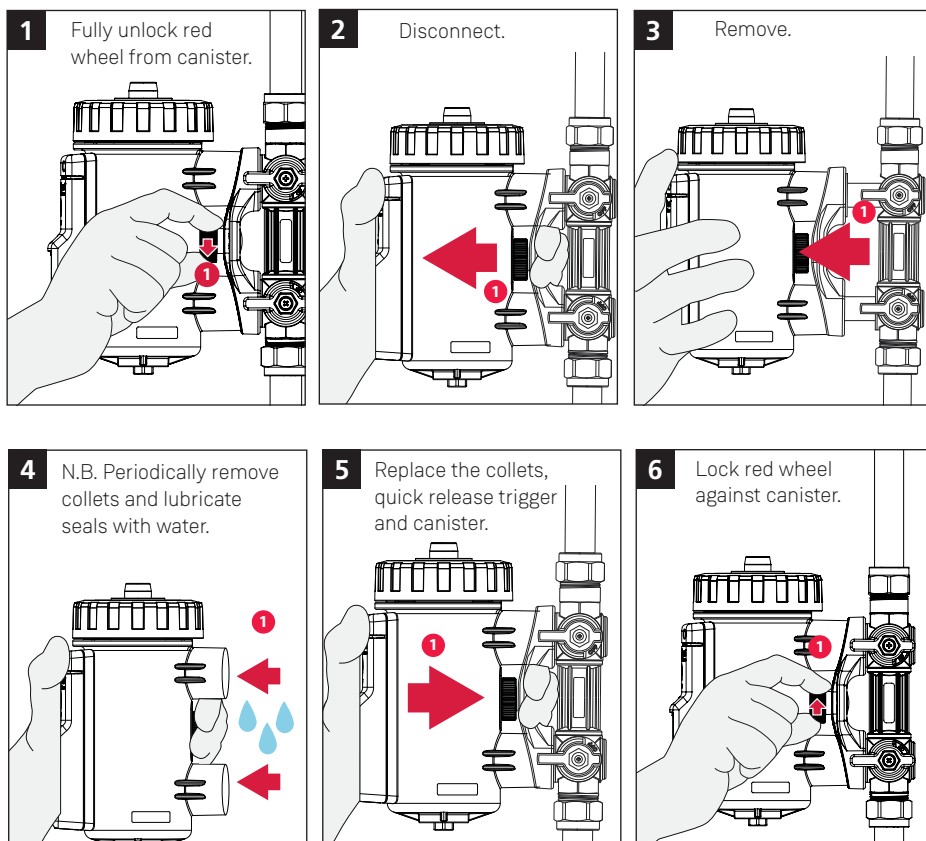
See product

## Quick-release trigger

*MagnaClean Professional3 Sense* incorporates a secure, quick-release, trigger which enables the filter to be removed and re-installed in seconds. The connections enable easy and swift filter removal during annual servicing or to undertake a *MagnaCleanse* system flush. This also makes it ideal for systems where there is little room to install a filter.

The following instructions are designed to support engineers in the safe and effective servicing of *MagnaClean Professional3 Sense* using the quick-release trigger.

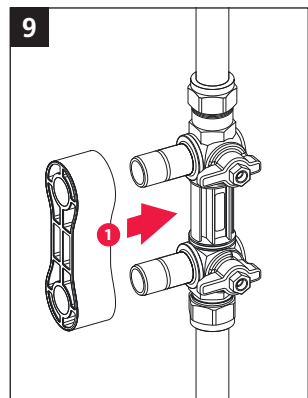
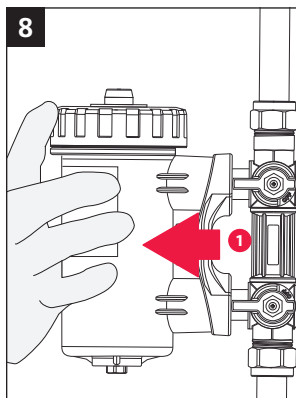
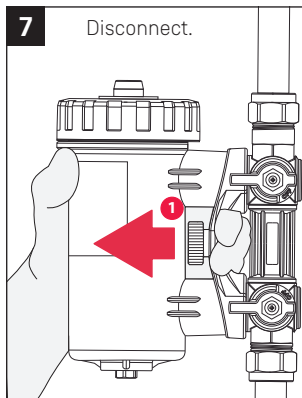
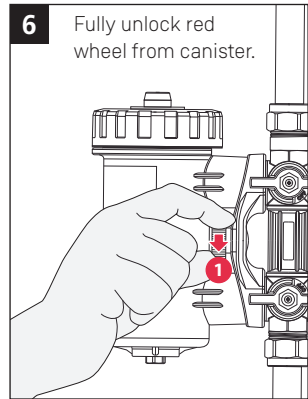
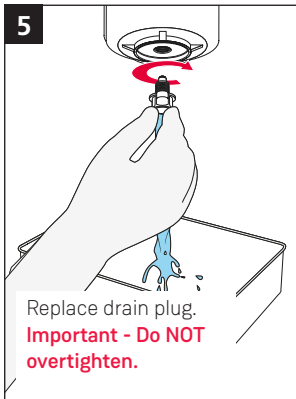
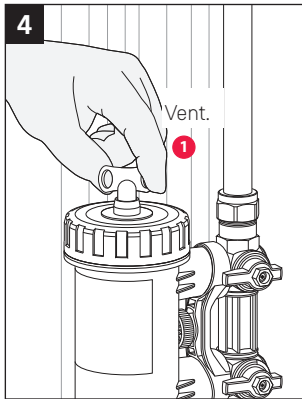
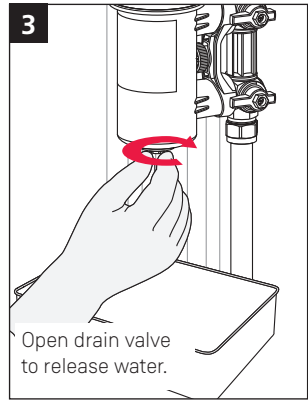
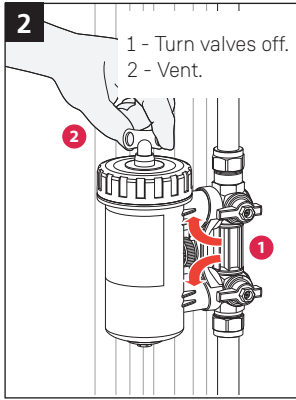
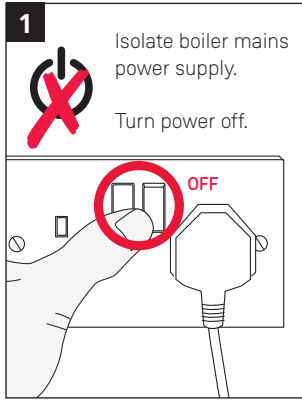
NOTE: Follow servicing steps 1, 2, 3, 4 and 5 before following Quick-release trigger instructions.



Visit [Plumb2u](https://www.plumb2u.com)

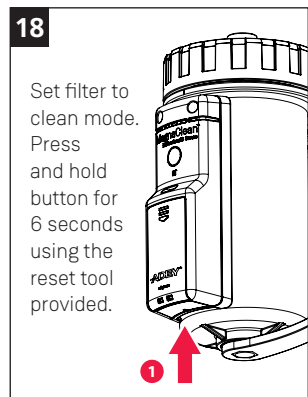
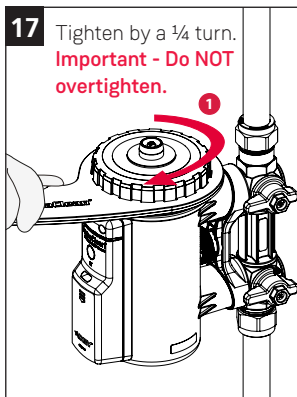
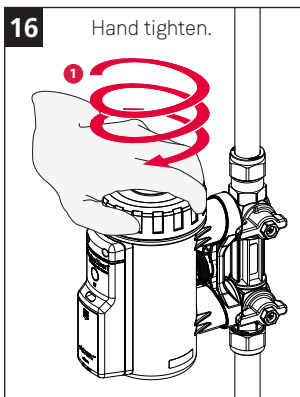
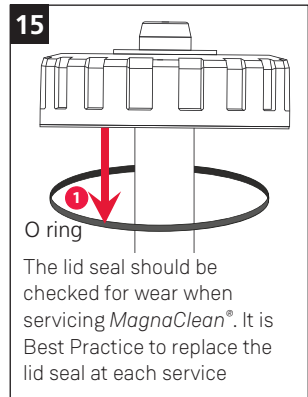
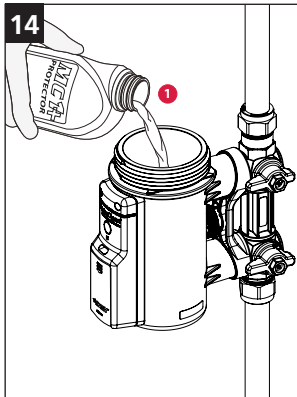
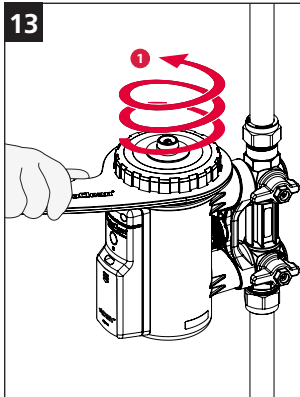
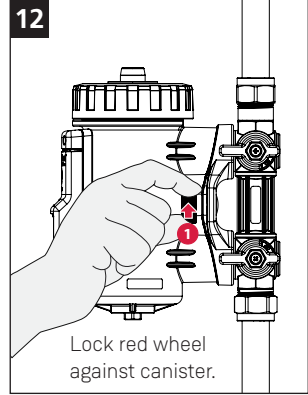
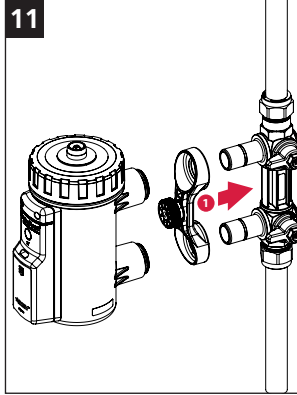
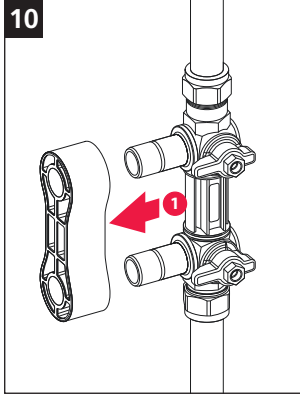
See product

# Retro-Fit Installation - Upgrade a MagnaClean Professional2® to a MagnaClean Professional3 Sense using the simple instructions below:



Visit [Plumb2u](https://www.plumb2u.com)

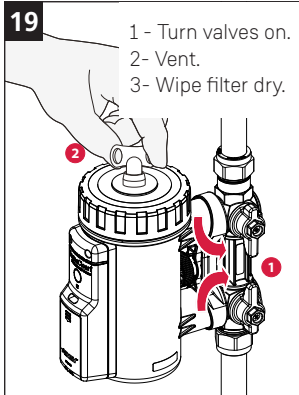
See product



Then follow the In App Filter Set-up instructions on page 3.

Visit [Plumb2u](https://www.Plumb2u.com)

See product



## Frequently asked questions

### Where do I download the App from?

The ADEY ProClub App is available to download for free from the Google Play or App store.

### What do I do if I've forgotten my password?

Click on 'forgotten password' in the App and follow the on-screen instructions to reset your password.

### How do I register the product warranty?

The product warranty is registered automatically as part of the product set up via the App. A warranty confirmation email will be sent to the installer and homeowner. If the homeowner wants proof that their product warranty has been registered you must enter their email address as part of the product set up on the App.

### How do I know if the product has been successfully connected to the homeowner's Wi-Fi?

Once the product has successfully connected it will appear in your App filter dashboard. You can view the status of all of your filter stock at anytime by clicking on the customer name within the App.

### What happens if the Wi-Fi drops out?

The product has an internal memory that will store data readings. All unsent readings will be transferred to the ADEY database when the Wi-Fi connection is restored.

### Can the homeowner have visibility of their filter performance?

Yes, we have developed an App designed specifically for the homeowner which simply tells them the status of magnetite build-up within their filter. They can download the *MagnaClean Sense HomeZone* App from the Google Play or App store.

### How secure is the homeowner's Wi-Fi password?

The homeowner's Wi-Fi password is entered in order to connect the filter to the router. It is not stored by the ADEY Proclub App and cannot be accessed by the installer after filter set up. The homeowner can enter the password at this stage of connection if they do not wish to share the password with the installer. The filter is securely encrypted to ensure the Wi-Fi password cannot be retrieved.

[Visit Plumb2u](#)

[See product](#)