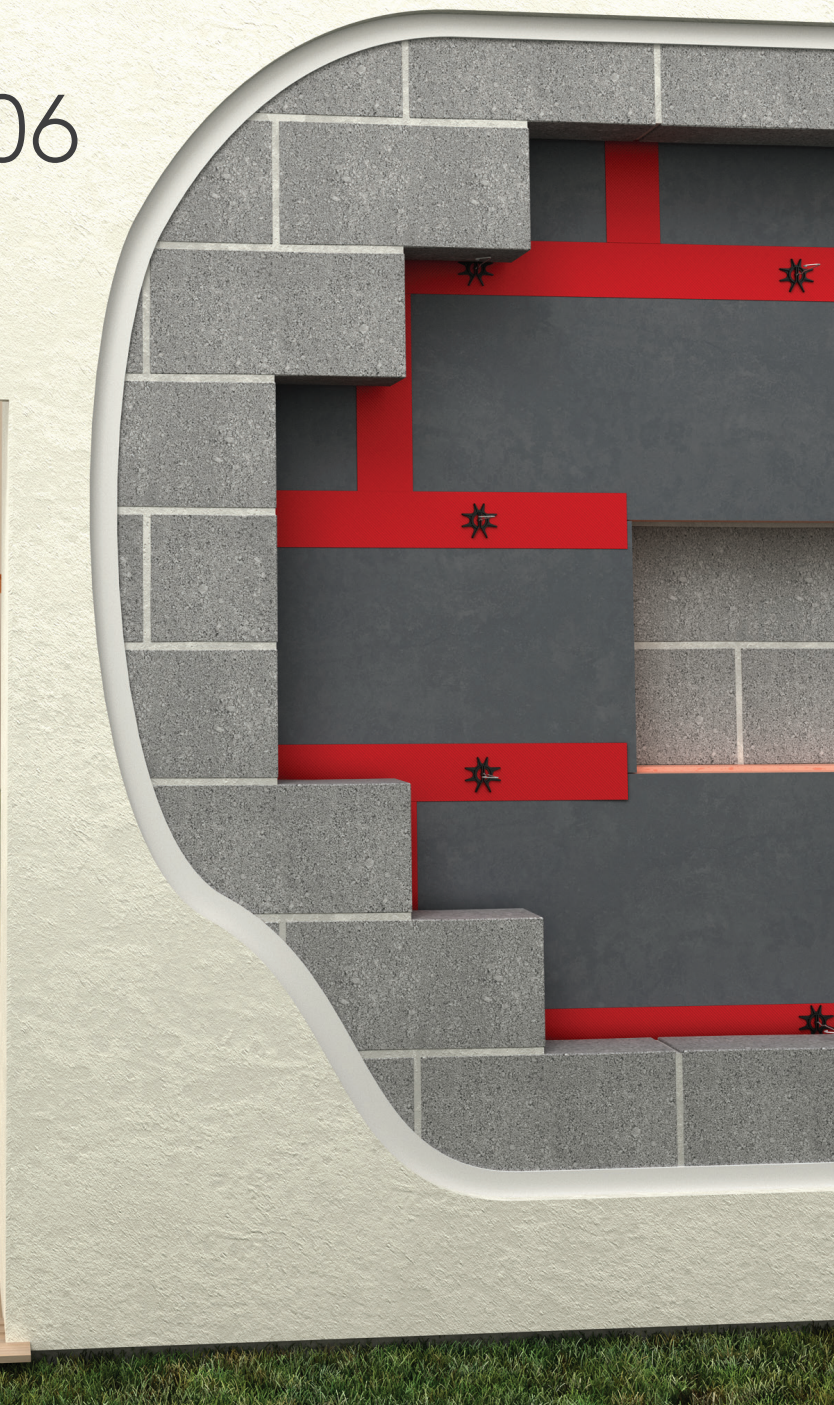


Kooltherm® K106 Cavity Board

Full fill cavity wall insulation



Contents

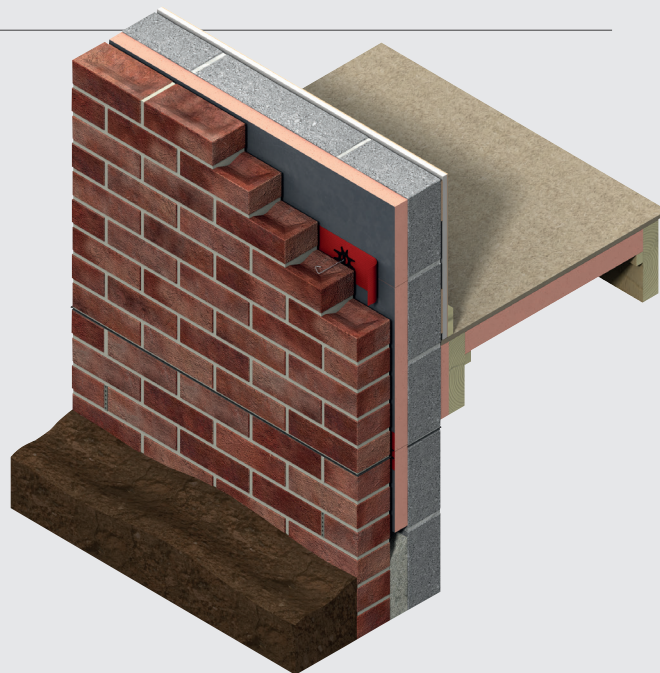
Introduction	1
Product details	2
The inner facing	2
The core	2
The outer facing	2
Standards & approvals	2
Standard dimensions	2
Compressive strength	2
Durability	2
Resistance to solvents, fungi & rodents	2
Fire performance	2
Thermal properties	2
Typical constructions & U-values	3
Assumptions	3
U-value table key	3
10 mm polymer rendered 100 mm dense block outer leaf / 100 mm block inner leaf	4
102.5 mm brick outer leaf / 100 mm block inner leaf	5
Design considerations	7
Heat loss and linear thermal bridging	7
Environmental impact & responsible sourcing	8
Sustainability & responsibility	8
Specification clause	8
Product classifications	8
Building Information Modelling (BIM)	8
Design standards	9
Residual cavity width	9
Wall ties	9
Lightning protection	9
Sitework	10
Fixing details	10
Excess mortar	10
General	11
About Kingspan Insulation	12
Products & solutions	12
Company details	16
Services	16
Planet Passionate	17

Introduction

- Premium performance rigid thermoset phenolic insulation - thermal conductivity of 0.019 W/mK
- Full fill cavity insulation with a 10 mm cavity that resists moisture penetration
- The water-tight, vapour-open polypropylene fleece outer facing protects against moisture penetration
- Unaffected by air infiltration
- Easy to handle and install compared to some other commonly used insulants



Visit our **free online U-value calculator**.
Offering free, quick and easy calculations
for wall, floor and roof constructions.



Useful links

Website

[Kingspan Kooltherm® K106 webpage](#)

Certification

[Kingspan Kooltherm® K106 BBA Certificate \(thicknesses of 25 – 150 mm\)](#)

Declaration of Performance (DoP)

[Kingspan Kooltherm® K106 Declaration of Performance \(UKDoP\)](#)

[Kingspan Kooltherm® K106 Declaration of Performance \(CPR\)](#)

Thermal modelling

[Kingspan Kooltherm® K106 indicative psi-values for 90 mm insulation in a 100 mm cavity](#)

[Kingspan Kooltherm® K106 indicative psi-values for 115 mm in a 125 mm cavity](#)

Safety information

[Kingspan Kooltherm® product safety information](#)

Product details

The inner facing

The inner (adjacent to the inner leaf) facing of Kingspan Kooltherm® K106 is a low emissivity composite foil, autohesively bonded to the insulation core during manufacture.

The core

The core of Kingspan Kooltherm® K106 is a premium performance rigid thermoset fibre-free phenolic insulant.

The outer facing

The outer (adjacent to the outer leaf) facing of Kingspan Kooltherm® K106 is a water-tight, vapour-open polypropylene fleece.

Standards & approvals

Kingspan Kooltherm® K106 is manufactured under a management system certified to ISO 9001: 2015 (Quality management systems), ISO 14001: 2015 (Environmental management systems), ISO 37301: 2021 (Compliance management systems), ISO 45001: 2018 (Occupational health and safety management systems) and ISO 50001: 2018 (Energy management systems).

The use of Kingspan Kooltherm® K106 (in thicknesses of 90 and 115 mm), produced at Kingspan Insulation's Pembridge, Herefordshire manufacturing facility is covered by BBA Certificate 16/5299.



Standard dimensions

Kingspan Kooltherm® K106 is available in the following standard size(s):

Nominal dimension	Availability
Length (mm)	1200
Width (mm)	450
Insulant thickness (mm)	Refer to local distributor or Kingspan Insulation price list for current stock and non-stock sizes.

Compressive strength

The average compressive strength of Kingspan Kooltherm® K106 exceeds 100 kPa when tested to BS EN 826: 2013 (Thermal insulating products for building applications. Determination of compression behaviour).

Durability

If correctly installed, Kingspan Kooltherm® K106 can have an indefinite life. Its durability depends on the supporting structure and the conditions of its use.

Resistance to solvents, fungi & rodents

The insulation core is resistant to short-term contact with petrol and with most dilute acids, alkalis and mineral oils. However, it is recommended that any spills be cleaned off fully before the boards are installed. Ensure that safe methods of cleaning are used, as recommended by suppliers of the spilt liquid. The insulation core is not resistant to some solvent-based adhesive systems, particularly those containing methyl ethyl ketone. Adhesives containing such solvents should not be used in association with this product. Damaged boards or boards that have been in contact with harsh solvents or acids should not be used.

The insulation core and facings used in the manufacture of Kingspan Kooltherm® K106 resist attack by mould and microbial growth and do not provide any food value to vermin.

Fire performance

There are potential restrictions placed upon this product which vary dependant on building type, height, construction and location. For guidance regarding the routes to compliance for meeting the fire safety requirements of the Building Regulations / Standards, refer to www.kingspaninsulation.co.uk/fireregulations (for GB) or contact technical services at technical@kingspaninsulation.ie (for Ireland).

Under System 4 AVCP, Kingspan Kooltherm® K106 has a Euroclass rating of F.

Further details of the fire performance of Kingspan Insulation products may be obtained from the Kingspan Insulation Technical Service Department (see rear cover).

Thermal properties

The λ -values and R-values detailed below are quoted in accordance with BS EN 13166: 2012 + A2: 2016 (Thermal insulation products for buildings. Factory made phenolic foam (PF) products. Specification).

Thermal conductivity

The boards achieve a thermal conductivity (λ -value) of 0.019 W/mK.

Thermal resistance

Thermal resistance (R-value) varies with thickness and is calculated by dividing the thickness of the board (expressed in metres) by its thermal conductivity. The resulting number is rounded down to the nearest 0.05 (m²K/W).

Insulant thickness (mm)	Thermal resistance (m ² K/W)
90	4.70
115	6.05

NB Refer to local distributor or Kingspan Insulation price list for current stock and non-stock sizes.

Typical constructions & U-values

Assumptions

The U-values in the tables that follow have been calculated using the method detailed in BS EN ISO 6946: 2017 (Building components and building elements. Thermal resistance and thermal transmittance. Calculation methods), and using the conventions set out in BR 443 (Conventions for U-value calculations). They are valid for the constructions shown in the details immediately above each table.

Unless stated otherwise, the internal wall finish is taken to be a 3 mm skim coated 12.5 mm plasterboard on dabs.

These U-values are valid for constructions with a 10 mm clear residual cavity between the outer surface of the insulation and the inner face of the outer masonry leaf.

NB When calculating U-values to BS EN ISO 6946: 2017, the type of wall tie used may change the thickness of insulation required. For overall cavity widths ≤ 125 mm, calculations assume a stainless steel flexible tie with 2.5 ties per m^2 and a cross-sectional area of 12.50 mm^2 .

NB For the purposes of these calculations the standard of workmanship has been assumed good, and therefore the correction factor for air gaps has been ignored.

NB The figures quoted are for guidance only. A detailed U-value calculation and a condensation risk analysis should be completed for each project.

NB If your construction is different from those specified, and / or to gain a comprehensive U-value calculation along with a condensation risk analysis of your project, seek assistance from the Kingspan Insulation Technical Service Department.

NB There are potential restrictions placed upon this product which vary dependant on building type, height, construction and location. For guidance regarding the routes to compliance for meeting the fire safety requirements of the Building Regulations / Standards, refer to www.kingspaninsulation.co.uk/fireregulations (for GB) or contact technical services at technical@kingspaninsulation.ie (for Ireland).

U-value table key

Further information on the applicable notional and area-weighted average limiting U-values is available in the relevant geographical documentation:

- Approved Documents L to the Building Regulations for England
- Approved Documents L to the Building Regulations for Wales
- Technical Handbooks Section 6 to the Building Standards for Scotland
- Technical Guidance Document L (Dwellings) and Technical Guidance Document L (Buildings other than Dwellings) to the Building Regulations for the Republic of Ireland
- Technical Booklets F1 & F2 to the Building Regulations for Northern Ireland.

Typical constructions & U-values

10 mm polymer rendered 100 mm dense block outer leaf* / 100 mm block inner leaf

Internal finish - fair faced blockwork

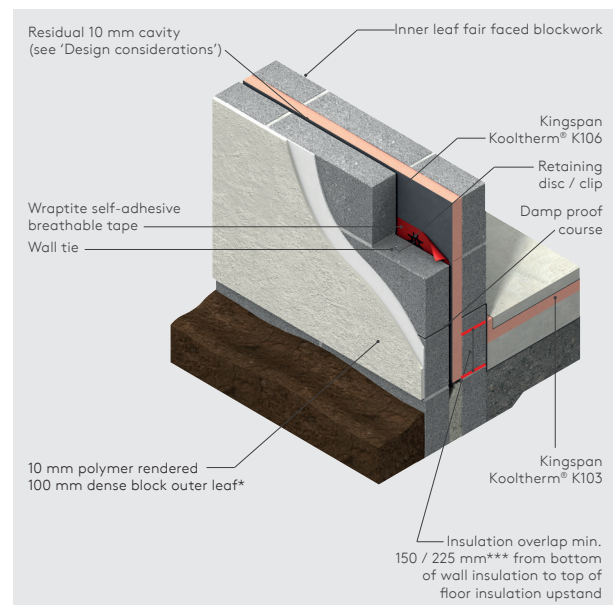


Figure 1

U-values (W/m ² K) for various thicknesses of Kingspan Kooltherm® K106				
Insulant thickness (mm)	Inner leaf fair faced blockwork density and λ-value (W/mK)			
	Dense (1.13)	Medium (0.51)	Lightweight (0.15)**	Aerated (0.11)**
90	0.19	0.18	0.17	0.17
115	0.15	0.15	0.14	0.14

* Calculations assume dense block outer leaf of λ-value (1.13 W/mK).

** A 6.6% thermal bridging factor has been assumed for the effect of mortar joints.

*** 150 mm applies to the UK and 225 mm to the Republic of Ireland.

NB Refer to local distributor or Kingspan Insulation price list for current stock and non-stock sizes.

Internal finish - 3 mm skim coated 12.5 mm plasterboard

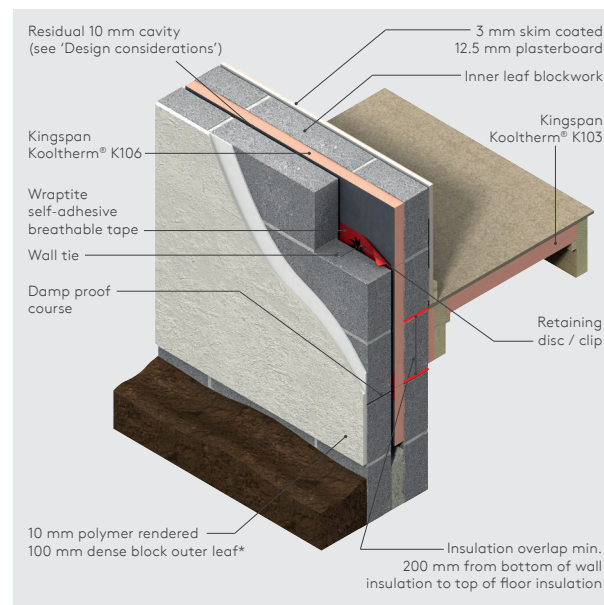


Figure 2

U-values (W/m ² K) for various thicknesses of Kingspan Kooltherm® K106				
Insulant thickness (mm)	Inner leaf blockwork density and λ-value (W/mK)			
	Dense (1.13)	Medium (0.51)	Lightweight (0.15)**	Aerated (0.11)**
90	0.18	0.18	0.17	0.16
115	0.15	0.14	0.14	0.13

* Calculations assume dense block outer leaf of λ-value (1.13 W/mK).

** A 6.6% thermal bridging factor has been assumed for the effect of mortar joints.

NB Refer to local distributor or Kingspan Insulation price list for current stock and non-stock sizes.

Typical constructions & U-values

Internal finish - Kingspan Kooltherm® K118 Insulated Plasterboard

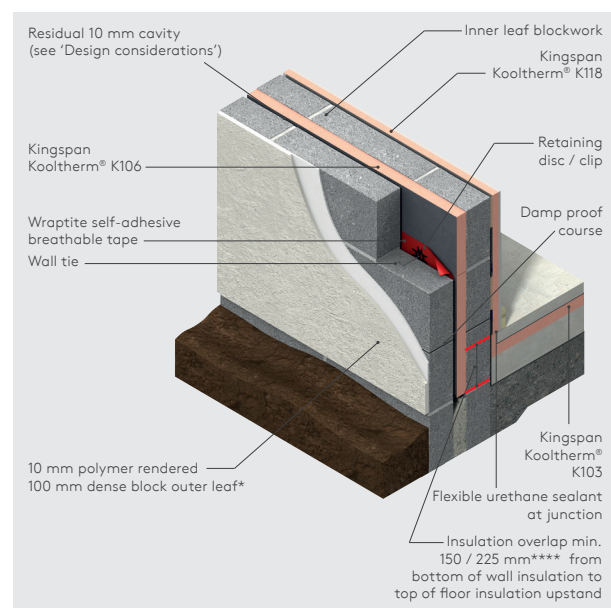


Figure 3

U-values (W/m ² K) for 37.5 mm thick Kingspan Kooltherm® K118** and various thicknesses of Kingspan Kooltherm® K106				
Thickness of Kingspan Kooltherm® K106 (mm)	Inner leaf blockwork density and λ-value (W/mK)			
	Dense (1.13)	Medium (0.51)	Lightweight (0.15)***	Aerated (0.11)***
90	0.14	0.14	0.13	0.13
115	0.12	0.12	0.11	0.11

* Calculations assume dense block outer leaf of λ-value (1.13 W/mK).

** Thickness shown = insulant thickness + 12.5 mm plasterboard.

*** A 6.6% thermal bridging factor has assumed for the effect of mortar joints.

**** 150 mm applies to the UK and 225 mm to the Republic of Ireland.

NB Refer to local distributor or Kingspan Insulation price list for current stock and non-stock sizes.

102.5 mm brick outer leaf / 100 mm block inner leaf

Internal finish - fair faced blockwork

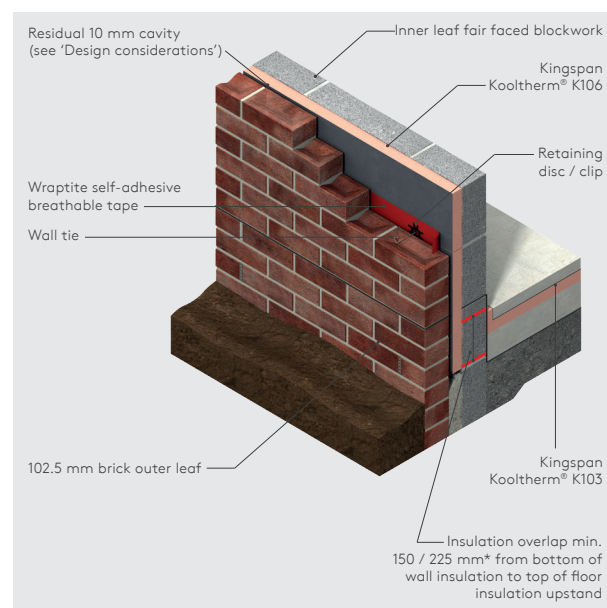


Figure 4

U-values (W/m ² K) for various thicknesses of Kingspan Kooltherm® K106				
Insulant thickness (mm)	Inner leaf fair faced blockwork density and λ-value (W/mK)			
	Dense (1.13)	Medium (0.51)	Lightweight (0.15)**	Aerated (0.11)**
90	0.19	0.19	0.17	0.17
115	0.15	0.15	0.14	0.14

* 150 mm applies to the UK and 225 mm to the Republic of Ireland.

** A 6.6% thermal bridging factor has been assumed for the effect of mortar joints.

NB Refer to local distributor or Kingspan Insulation price list for current stock and non-stock sizes.

Typical constructions & U-values

Internal finish - 3 mm skim coated 12.5 mm plasterboard

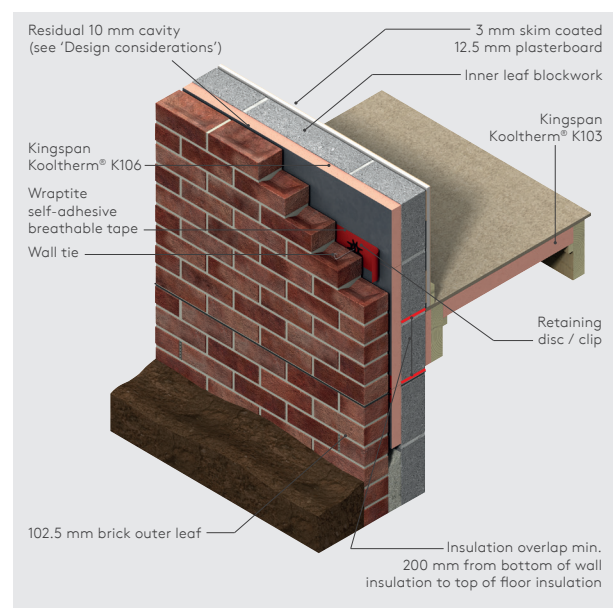


Figure 5

U-values (W/m ² K) for various thicknesses of Kingspan Kooltherm® K106				
Insulant thickness (mm)	Inner leaf blockwork density and λ-value (W/mK)			
	Dense (1.13)	Medium (0.51)	Lightweight (0.15)*	Aerated (0.11)*
90	0.18	0.18	0.17	0.16
115	0.15	0.14	0.14	0.13

* A 6.6% thermal bridging factor has been assumed for the effect of mortar joints.

NB Refer to local distributor or Kingspan Insulation price list for current stock and non-stock sizes.

Internal finish - Kingspan Kooltherm® K118

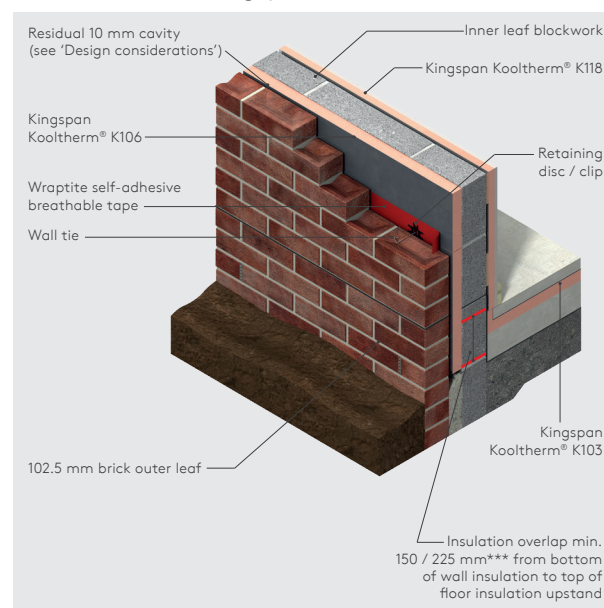


Figure 6

U-values (W/m ² K) for 37.5 mm thick Kingspan Kooltherm® K118* and various thicknesses of Kingspan Kooltherm® K106				
Thickness of Kingspan Kooltherm® K106 (mm)	Inner leaf blockwork density and λ-value (W/mK)			
	Dense (1.13)	Medium (0.51)	Lightweight (0.15)**	Aerated (0.11)**
90	0.14	0.14	0.14	0.13
115	0.12	0.12	0.11	0.11

* Thickness shown = insulant thickness + 12.5 mm plasterboard.

** A 6.6% thermal bridging factor has assumed for the effect of mortar joints.

*** 150 mm applies to the UK and 225 mm to the Republic of Ireland.

NB Refer to local distributor or Kingspan Insulation price list for current stock and non-stock sizes.

Design considerations

Heat loss & linear thermal bridging

Basic principles

Linear thermal bridging describes the additional heat losses or gains that occur at junctions between elements e.g. where a cavity wall meets the ground or intermediate floor, or at junctions around openings in the building fabric where the thermal insulation layer is discontinuous e.g. sills, jambs and lintels.

Interruptions within the insulation layer by materials with poorer insulating properties can result in a thermal bridge, which in turn can lead to problems of internal surface condensation and mould growth, especially if there is a drop in surface temperature.

The heat flow at these junctions and opening locations, over and above that through the adjoining plane elements, is the linear thermal transmittance of the thermal bridge. This is measured in W/mK , referred to as a 'psi-value', and expressed as a ' ψ -value'.

The lower the ψ -value, the better the performance. ψ -values are taken into account in the calculation methodologies e.g. the Standard Assessment Procedure (SAP) that are used to assess the operational CO_2 emissions and, where applicable, the fabric energy efficiency of buildings, primary energy or delivered energy rates.

ψ -values can comprise either, or a combination of, calculated and assumed values.

Approved details, such as the Acceptable Construction Details (Republic of Ireland), can uplift performance to provide a clear starting point towards achieving compliance, but can be limited in scope and applicability. The greatest opportunity for mitigating the impact of linear thermal bridges can come from following accurately 'modelled' details that take into account the following design considerations.

Reducing linear thermal bridging

Detailing at junctions to minimise the effects of thermal bridging and the associated risk of condensation or mould growth is important and there are some simple design considerations that can be adopted to help mitigate the risks and to reduce heat losses.

- Care is required to ensure continuation of insulation wherever possible for best thermal performance. Where this is not possible, insulation layers should be overlapped and ideally, insulation material introduced between. In a standard cavity wall-to-ground floor junction, the main linear thermal bridge is the inner leaf of masonry. This linear thermal bridge can be reduced by increasing the distance that the heat has to travel through the inner leaf of masonry. This can be achieved by means of overlapping the partial fill cavity wall insulation and the floor insulation. The key factor is the distance between the bottom of the cavity wall insulation and the top of the floor insulation (including any perimeter insulation upstand).

- In order to minimise cold bridging at the edge of ground floors, the distance between the top surface of the floor insulation or perimeter insulation upstand, and the bottom of the wall insulation must be a minimum of 150 / 225* mm for a concrete floor (see Figures 1 & 4) and 200 mm for a suspended timber floor (see Figures 2 & 5). The further appropriate wall insulation extends past the floor insulation, the better the thermal performance of the junction between the wall and the floor.

* 150 mm applies to the UK and 225 mm to the Republic of Ireland.

- Perimeter upstand insulation is extremely important for minimising heat losses from the junction with external walls. This helps to increase the path of heat flow and therefore helps reduce losses through the junction. Omitting this, or using a poorer performance insulation for this purpose, can increase these losses.
- Using better thermal performance 'lightweight' aggregate blockwork on the inner leaf in adjacency to the junction with the floor can also assist with assuring lower heat losses from the junction.
- An internal lining of insulation on the warm side of the construction, such as Kingspan Kooltherm® K118 Insulated Plasterboard, can also help to reduce heat losses.
- Prevention of thermal bridging should be considered when designing sills, jambs and lintels.
- Heat-loss from junctions around window or door openings can be further reduced by insulating the reveal. The key factor is the thermal resistance (R-value) of the insulation layer. Reveals should be designed to accommodate a minimal thickness of Kingspan Kooltherm® K118.
- For junctions between the external walls and roof constructions, continuity and overlap of insulation layers is the key to minimising heat losses from the junctions. Refer to **Kingspan Kooltherm® K107 Pitched Roof Board literature** for further design considerations.



To download indicative psi-values and thermally modelled junctions for Kingspan Kooltherm® K106 please visit www.kingspaninsulation.co.uk/constructiondetails.

Design considerations

Environmental impact & responsible sourcing

Environmental Product Declaration

An Environmental Product Declaration (EPD), certified by BRE Global to the BRE Environmental Profiles 2013 Product Category Rules for Type III environmental product declaration of construction products to EN 15804: 2012 + A1: 2013 (Sustainability of construction works. Environmental product declarations. Core rules for the product category of construction products), has been created for Kingspan Kooltherm® K106 produced at Kingspan Insulation's Pembridge, Herefordshire manufacturing facility.

Responsible sourcing

Kingspan Kooltherm® K106 produced at Kingspan Insulation's Pembridge, Herefordshire manufacturing facility is certified to BES 6001 (Framework Standard for the Responsible Sourcing of Construction Products) 'Good'.



To download the EPD or certification please visit our **website**.

Sustainability & responsibility

Kingspan Insulation has a long-term commitment to sustainability and responsibility: as a manufacturer and supplier of insulation products; as an employer; as a substantial landholder; and as a key member of its neighbouring communities.

A report covering the sustainability and responsibility of Kingspan Insulation Ltd's British operations at its Pembridge, Herefordshire and Selby, North Yorkshire manufacturing facilities is available upon request from literature@kingspaninsulation.co.uk.

Specification clause

Kingspan Kooltherm® K106 should be described in specifications as:

The cavity wall insulation shall be Kingspan Kooltherm® K106 ____ mm thick: comprising a premium performance rigid thermoset fibre-free phenolic insulation core, faced on one side with a low emissivity composite foil, and faced on the other side with a water-tight, vapour-open polypropylene fleece. The product shall have a thermal conductivity of 0.019 W/mK. The product shall be manufactured: under a management system certified to ISO 9001: 2015, ISO 14001: 2015, ISO 37301: 2021, ISO 45001: 2018 and ISO 50001: 2018; by Kingspan Insulation Limited; and installed in accordance with the instructions issued by them.

Product classifications

Uniclass UK

Pr_25_71_63_59 Phenolic Foam Boards
Pr_80_77_76_62 Phenolic Foam Insulation

CAWS

F30/10, F30/150

Details also available at the **NBS Source**.

Building Information Modelling (BIM)

BIM objects for Kingspan Kooltherm® K106 can be downloaded using the Kingspan BIM Designer Software Tool available at www.kingspaninsulation.co.uk/k106.

Design considerations

Design standards

The following should be consulted regarding the construction of insulated cavity walls:

- BS / I.S. EN 845-1: 2013 + A1: 2016 (Specification for ancillary components for masonry - Wall ties, tension straps, hangers and brackets).
- BS EN 1996-1-1: 2022 (Eurocode 6. Design of masonry structures - General rules for reinforced and unreinforced masonry structures) / I.S. EN 1996-1-1: 2005 + A1: 2012 (Eurocode 6 - Design of masonry structures - Part 1-1: General rules for reinforced and unreinforced masonry structures).
- BS / I.S. EN 1996-2: 2006 (Eurocode 6. Design of masonry structures - Design considerations, selection of materials and execution of masonry).
- BS / I.S. EN 1996-3: 2006 (Eurocode 6. Design of masonry structures - Simplified calculation methods for unreinforced masonry structures).
- PD 6697: 2019 (Recommendations for the design of masonry structures to BS EN 1996-1-1 and BS EN 1996-2).

Residual cavity width

A 10 mm residual cavity width is recommended between the insulation and the outer leaf for wall heights up to 25 metres. For further details please refer to BBA Certificate 16/5299.

The NHBC accepts the use of Kingspan Kooltherm® K106 with a 10 mm residual cavity, except for fair-faced masonry applications in areas of very severe exposure.

Wall ties

Wall ties should have a retaining clip / disc for securing the insulant to the masonry plane. Ideally they should be BBA / NSAI approved and conform to BS / I.S. EN 845-1: 2013 + A1: 2016, BS EN 1996-1-1: 2022 / I.S. EN 1996-1-1: 2005 + A1: 2012, BS / I.S. EN 1996-2: 2006 (Eurocode 6. Design of masonry structures. Design considerations, selection of materials and execution of masonry), BS / I.S. EN 1996-3: 2006 and PD 6697: 2019.

Lightning protection

Building designers should give consideration to the requirements of BS EN 62305: 2011 - 2012 (Protection against lightning).

Sitework

Fixing details

- Kingspan Kooltherm® K106 should be held in position by the wall ties used to tie the two skins of masonry together.
- Wall ties should include a retaining disc / clip of a thickness no greater than 10 mm. For advice on the specification of retaining discs / clips, please refer to:
Ancon Building Products +44 (0) 1142 755 224
www.ancon.co.uk
- For a solid concrete ground floor the first row of wall ties are installed in the inner leaf at 600 mm horizontal centres a minimum of one course of blockwork below the damp proof course, or 150 mm (for the UK) and 225 mm (for the Republic of Ireland) below the top surface of the ground floor perimeter insulation upstand (see 'Linear thermal bridging at wall to floor junctions' section), whichever is the lower.

- For a suspended timber floor, the first row of wall ties are installed in the inner leaf at 600 mm horizontal centres a minimum of 200 mm below the top surface of the ground floor perimeter insulation upstand (see 'Linear thermal bridging at wall to floor junctions' section).
- Continue constructing the inner leaf up to the next wall tie course (450 mm above the first - usually two block courses).
- The next course of wall ties is positioned at the usual 900 mm horizontal centres in the UK and 750 mm horizontal centres in Ireland.
- The next course of blockwork is installed to secure the ties.
- The first row of insulation boards should now be installed between the two rows of wall ties, ensuring each insulation board is retained tight against the inner leaf and joints are lightly butted.
- Insulation boards should be installed with the composite foil facer against the inner leaf, with the polypropylene fleece facing exposed.
- Each board should be secured at a minimum of three points. Additional ties may also be required to satisfy the structural requirements of BS / I.S. EN 845-1: 2013 + A1: 2016, BS EN 1996-1-1: 2022 / I.S. EN 1996-1: 2005 A1: 2012, BS / I.S. EN 1996-2: 2006, BS / I.S. EN 1996-3: 2006, PD 6697: 2019 and / or to ensure adequate retention of boards or cut pieces.
- Wraptite, a self-adhesive breathable tape, no less than 100 mm wide, should be applied to all horizontal and vertical joints, board edges and abutting junction interfaces e.g. Kingspan Kooltherm® Cavity Closer. For advice on Wraptite tape, please refer to:

A. Proctor Group Ltd. +44 (0) 1250 872 261
www.proctorgroup.com

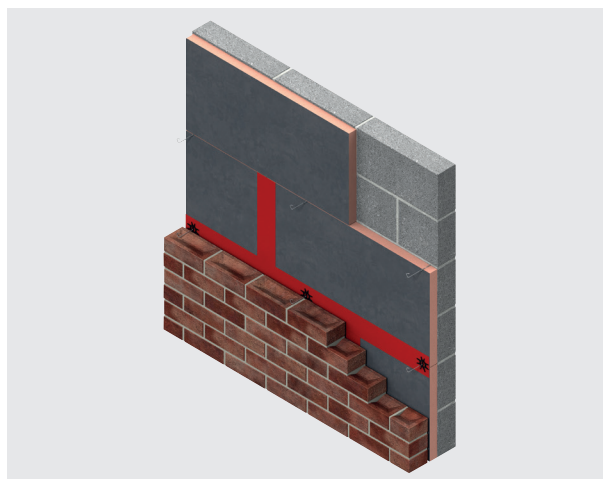


Figure 7: Wraptite self-adhesive breathable tape should be applied

- The tape should be applied in a smooth and wrinkle-free manner and should extend no less than 50 mm either side of joints, board edges and abutting junction interfaces. If necessary, additional layers of tape may be applied. The seal must be maintained at protrusion locations e.g. wall ties.
- To ensure successful adhesion, all surfaces to receive tape should be made clean, dry and free from grease, dust, dirt and all other foreign matter prior to application. A gentle pressure may also be exerted during application.
- The outer leaf is then built up to the level of the top of the boards and the process is repeated.
- When insulating a gable, insulation boards should be continued 200 mm beyond the height of the top storey ceiling and a cavity tray installed above the insulation.

Excess mortar

- After raising each section of inner leaf, before installation of the insulation board, excess mortar should be removed and mortar droppings cleaned from exposed edges of the installed insulation boards.
- Use of a cavity batten or cavity board is recommended to protect board edges and maintain a clear cavity (see Figures 8 & 9) or refer to BBA Certificate 16/5299.

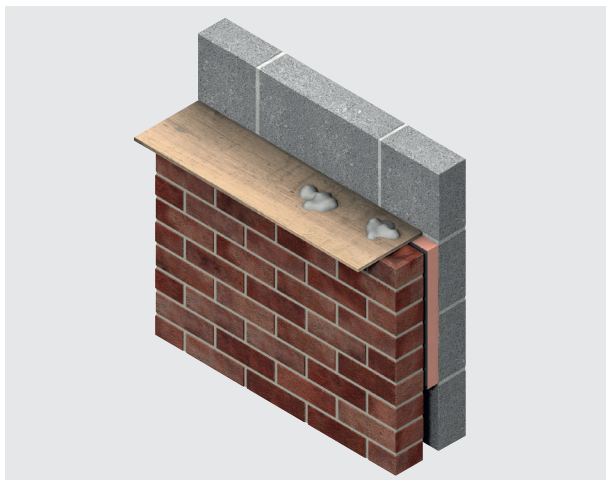


Figure 8: Use of a cavity board to protect the cavity and insulation board top edge

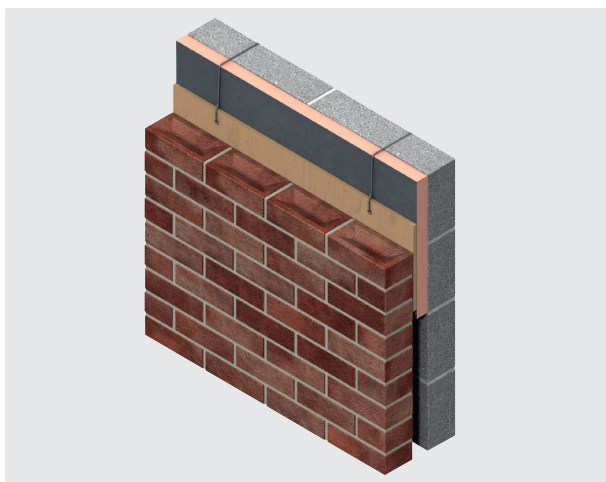


Figure 9: Use of a cavity batten to protect the cavity

General

Cutting

- Cutting should be carried out either by using a fine toothed saw, or by scoring with a sharp knife, snapping the board over a straight edge and then cutting the facing on the other side.
- Ensure accurate trimming to achieve close butting joints and continuity of insulation.

Daily working practice

- At the completion of each day's work, or whenever work is interrupted for extended periods of time, board edges and joints should be protected from inclement weather.

Availability

- Kingspan Kooltherm® K106 is available through specialist insulation distributors and selected builders' merchants throughout UK and Ireland.

Packaging and storage

- The polyethylene packaging of Kingspan Insulation products, which is recyclable, should not be considered adequate for outdoor protection.
- Ideally, boards should be stored inside a building. If, however, outside storage cannot be avoided, then the boards should be stacked clear of the ground and covered with an opaque polythene sheet or weatherproof tarpaulin. Boards that have been allowed to get wet should not be used.

Health and safety

- Kingspan Insulation products are chemically inert.
- A Safety Information Data Sheet for this product is available from the Kingspan Insulation website www.kingspaninsulation.co.uk/safety or www.kingspaninsulation.ie/safety.

Please note that the reflective inner facing will reflect light as well as heat, including ultraviolet light. Therefore, if this product is being installed during very bright or sunny weather, it is advisable to wear UV protective sunglasses or goggles, and if the skin is exposed for a significant period of time, to protect the bare skin with a UV block sun cream. Once installed against the inner leaf, the inner facing should no longer be exposed.

The reflective facings used on this product can be slippery when wet. Therefore, it is recommended that any excess material should be contained to avoid a slip hazard.

Warning - do not stand on or otherwise support your weight on this product unless it is fully supported by a load bearing surface.

About Kingspan Insulation

Products & solutions

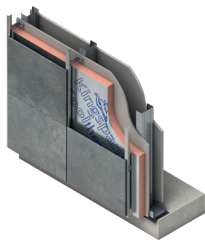
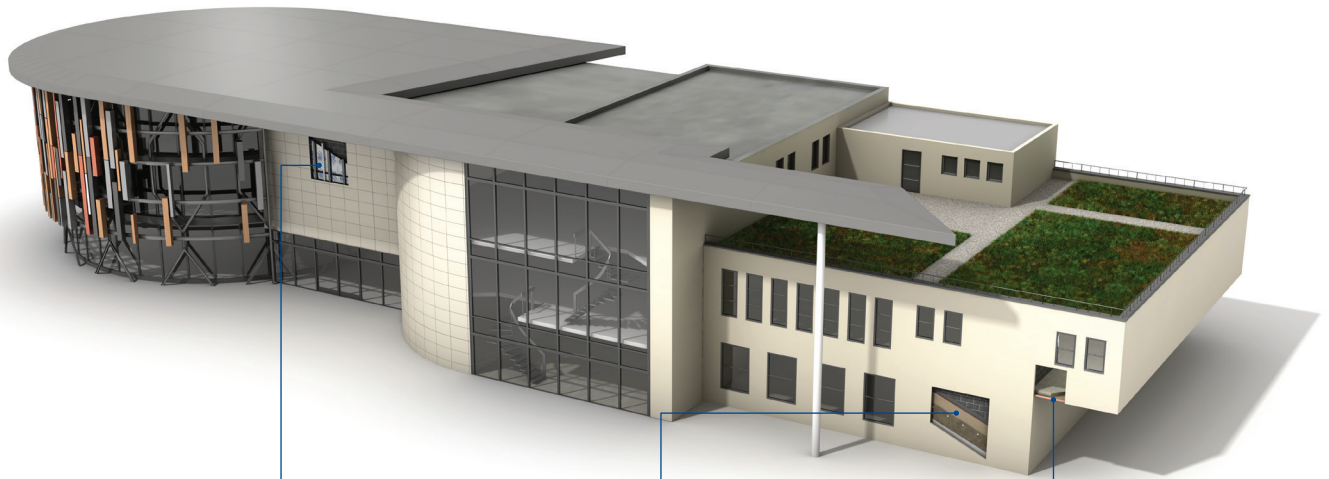
Rigid insulation products for building fabric applications, including roofs, walls and floors.

- Kingspan AlphaCore® – microporous silica-based insulation.
- Kingspan OPTIM-R® – vacuum insulation panel (VIP) systems.
- Kingspan Kooltherm® – phenolic insulation.
- Kingspan Therma™ – PIR insulation.
- K-Roc® – rock mineral fibre insulation.
- Kingspan GreenGuard® – extruded polystyrene insulation (XPS).
- Kingspan TEK® – structural insulated panels (SIPs).
- Cavity closers – PVC-U extrusions with an insulation core.
- Membranes – for pitched roofs and walls.

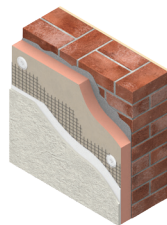


About Kingspan Insulation

Solutions available for roofs, walls and floors of commercial buildings, from schools to retail.



Insulation for use behind rainscreen or masonry façade systems



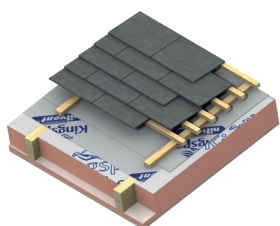
External insulation for masonry walls



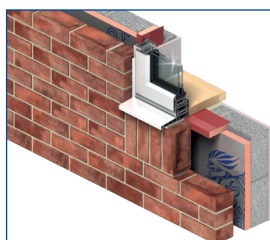
Insulation for structural ceilings (soffits)

About Kingspan Insulation

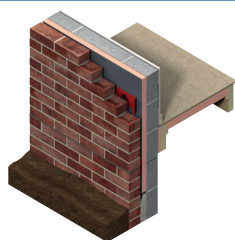
From new housing developments to refurbishing your home, we offer a number of different solutions for roof, wall and floor applications.



Insulation for tiled or slated pitched warm roof spaces

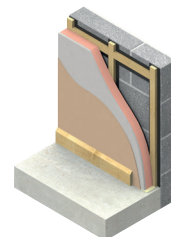
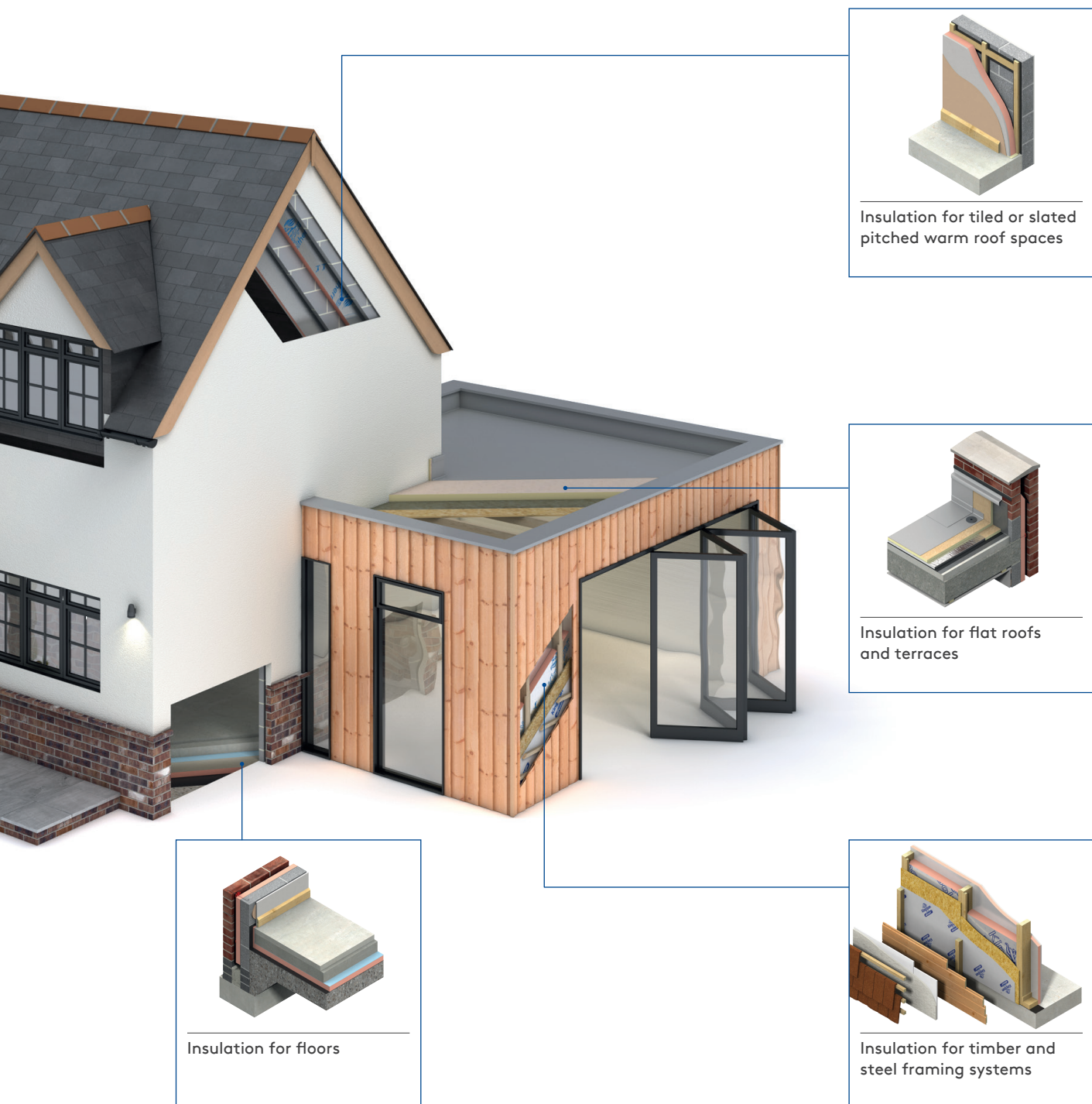


Insulated extrusions for closing wall cavities at openings

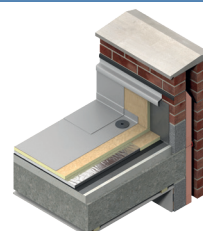


Full and partial fill cavity wall insulation

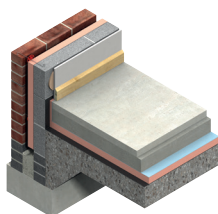




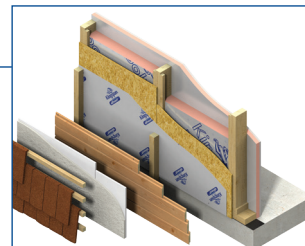
Insulation for tiled or slated pitched warm roof spaces



Insulation for flat roofs and terraces



Insulation for floors



Insulation for timber and steel framing systems

About Kingspan Insulation

Company details

Kingspan Insulation Ltd is part of the Kingspan Group plc., one of Europe's leading construction product manufacturers. The Kingspan Group was formed in the late 1960s and is a publicly quoted group of companies headquartered in Kingscourt, County Cavan, Ireland.



Kingspan Insulation Ltd is a leading manufacturer of rigid insulation products and insulated systems for building fabric and building services applications.

Our GB head office is located in Pembridge, in the heart of rural Herefordshire. Our northern hub is near Selby in North Yorkshire. We also have a site in Castleblayney, Ireland. All three sites are accredited to the independent compliance standard ISO 37301: 2021.



Services

Our support services provide fast and accurate advice no matter what your role is. Visit our website to access the following services.

- U-value calculations – free, quick and easy U-value calculations with our U-value Calculator.
- Help and advice on your projects, including stockists, how to guides, regulatory guidance and e-learning.
- Dedicated Specification and Sales teams to support projects.
- Building Information Modelling (BIM) – download BIM objects for our products.
- Tapered roofing service – Kingspan Insulation's tapered roofing systems come with a supporting design service to ensure the most cost-effective solution for a roof is identified.



- CPDs – Kingspan Insulation offers a number of free CPD seminars for architects and specifiers covering a wide range of industry topics. CPDs can be booked or a range of courses can be found online.
- Product awareness training – build your team's knowledge with on-site training and support with one of our experienced product technicians who cover the full range of Kingspan products and applications, from flooring to roofing and everything in-between with both internal and external wall insulations.





Planet Passionate is our group wide global sustainability programme.

Our Planet Passionate programme aims to have a positive impact on three big global challenges: climate change, circularity and protection of our natural world.



Scan for our latest progress report to learn more about our targets, partnerships and global commitments.



Contact details

Great Britain

Pembridge | Leominster
Herefordshire | HR6 9LA

T: +44 (0) 1544 388 601

E: info@kingspaninsulation.co.uk

www.kingspaninsulation.co.uk

For individual department contact details please visit

www.kingspaninsulation.co.uk/contact



Visit our free online U-value calculator.
Offering free, quick and easy calculations
for wall, floor and roof constructions.

Ireland

Kingspan Insulation Ltd
Castleblayney | County Monaghan

T: +353 (0) 42 979 5000

E: info@kingspaninsulation.ie

www.kingspaninsulation.ie

For individual department contact details please visit

www.kingspaninsulation.ie/contact



Visit our free online U-value calculator.
Offering free, quick and easy calculations
for wall, floor and roof constructions.



For the most up-to-date
version of this brochure
please scan or click [here](#).

To access pre-existing product information or information relating to previously sold/discontinued products please email literature@kingspaninsulation.co.uk.

The information contained in this brochure is believed to be correct at the date of publication. Kingspan Insulation Limited ("Kingspan Insulation") reserves the right to alter or amend the product specifications without notice due to continuous improvement commitments. There may also be relevant changes between publications with regard to legislation, or other developments affecting the accuracy of the information contained in this brochure. Product thicknesses shown in this document should not be taken as being available ex-stock and reference should be made to the current Kingspan Insulation price-list or advice sought from Kingspan Insulation's Customer Service Department. The information, technical details and fixing instructions etc. included in this literature are given in good faith and apply to uses described. Kingspan Insulation does not accept responsibility for issues arising from using products in applications different from those described within this brochure or failure to correctly follow the information or instructions as described within this brochure. Recommendations for use should be verified with a suitable expert or professional for suitability and compliance with actual requirements, specifications and any applicable laws and regulations. For other applications or conditions of use, Kingspan Insulation offers a technical advisory service (see above for contact details), the advice of which should be sought for uses of Kingspan Insulation products that are not specifically described herein. Please check that your copy of this literature is current by contacting the Kingspan Insulation Marketing Department.

© Kingspan, Kingspan GreenGuard, Kooltherm, K-Roc, OPTIM-R, TEK and the Lion Device are Registered Trademarks of the Kingspan Group plc in the UK, Ireland and other countries. All rights reserved.

TM Therma is a Trademark of the Kingspan Group plc.

Kingspan Insulation Ltd is not associated with, and its products have not necessarily been tested by, the GREENGUARD Environmental Institute.

Registered in England & Wales, No. 01882722. Registered Office: Pembridge, Leominster, Herefordshire HR6 9LA UK. VAT GB428602456.

Registered in Ireland, No. 54621. Registered Office: Bree Industrial Estate, Castleblayney, Co. Monaghan, Ireland. VAT IE4575069I.

